



G O L D E N A C R E
H O M E & G A R D E N

SINCE 1967



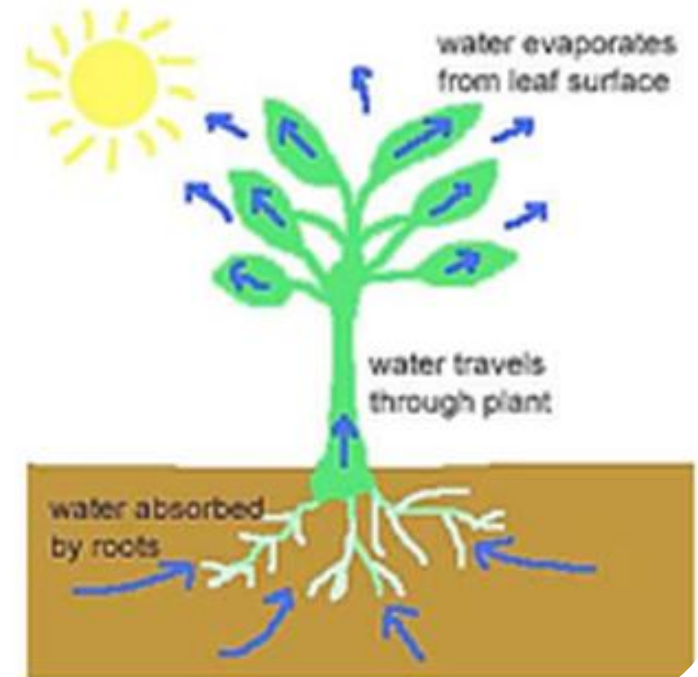
Watering and maintenance.



Why do we water?

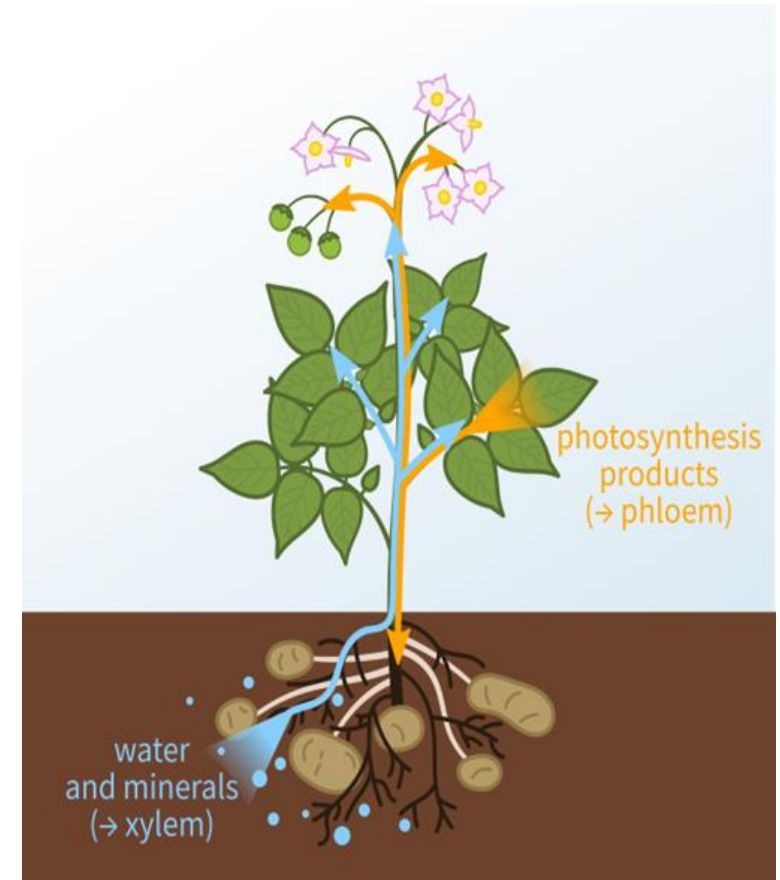
Like all living things plants require water to live. And like all living things how much they get and where it is applied makes a big difference to how the plant utilizes it. The key reasons for watering are –

- Photosynthesis
- Absorption of nutrients/transporting sugars.
- Strengthen cell walls through turgor.

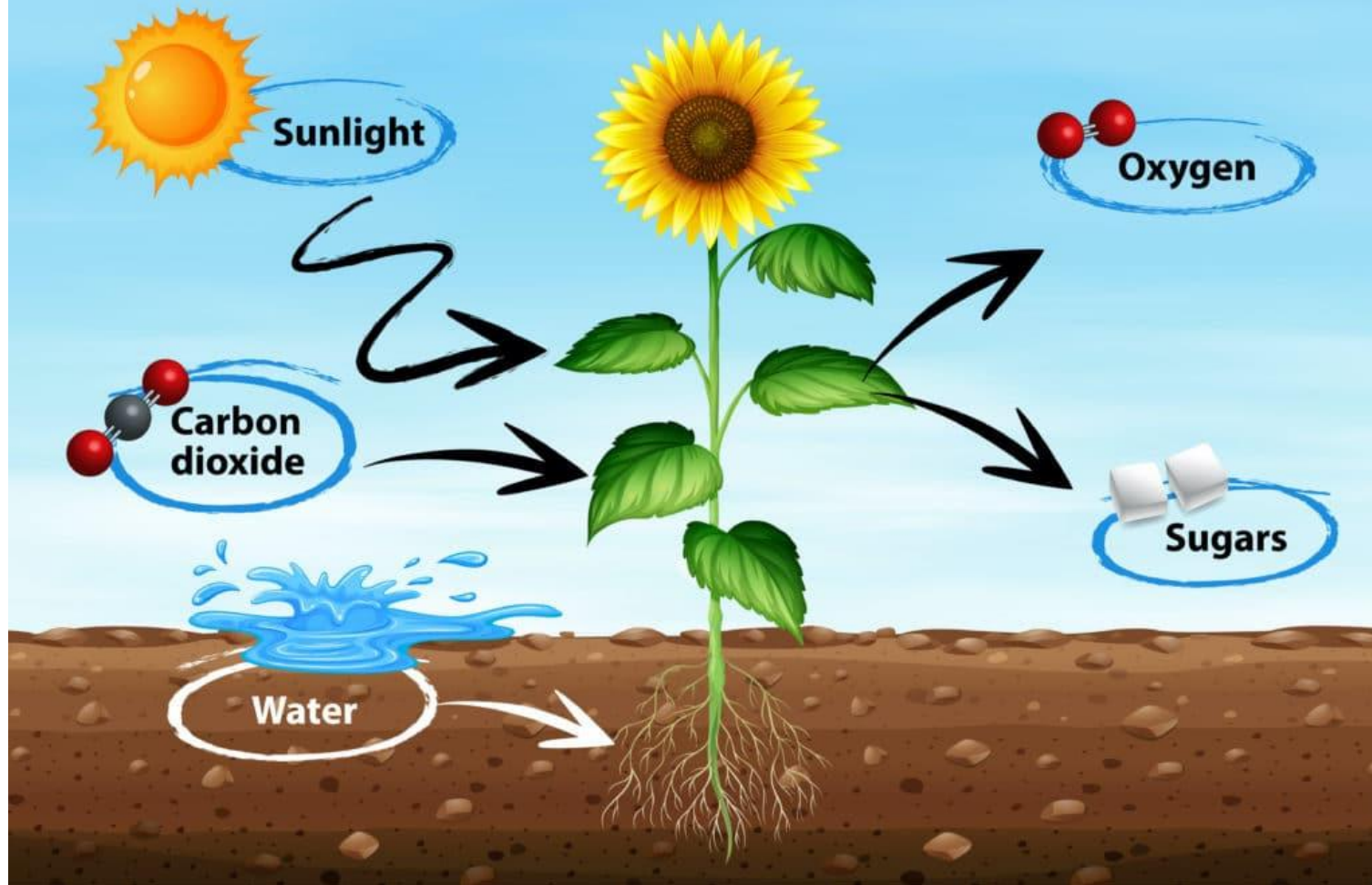


Photosynthesis

- Plant food.
- Chemical reaction that takes place in the chloroplast.
- $\text{CO}_2 + \text{Light} + \text{H}_2\text{O} = \text{Sugar and O}_2$
- Utilizes the phloem and xylem systems.
- Phloem moves sugars.
- Xylem moves water and nutrients.



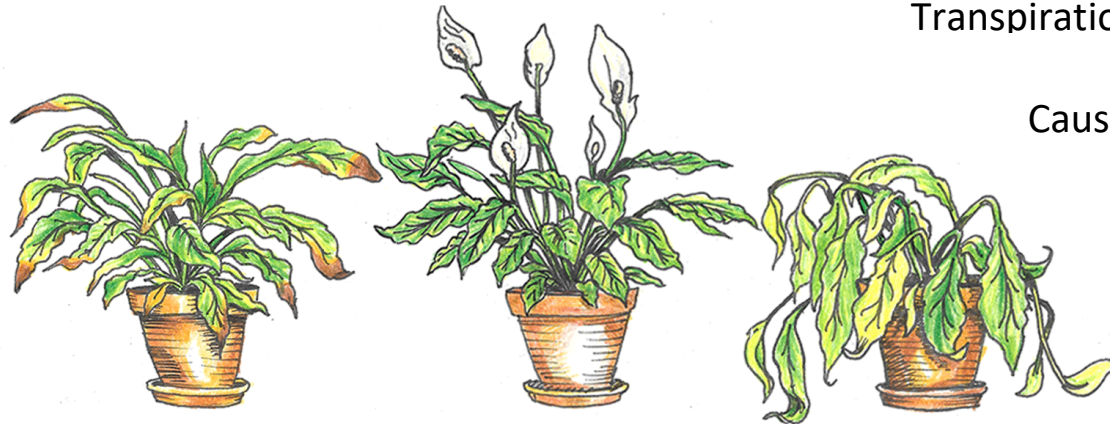
Process of Photosynthesis



Watering amounts

Overwater

- Does not allow roots to breathe.
- Causes root decay.
- Causes root rot.
- Inhibits the xylem system.
- Can cause wilt.
- Good soil will help



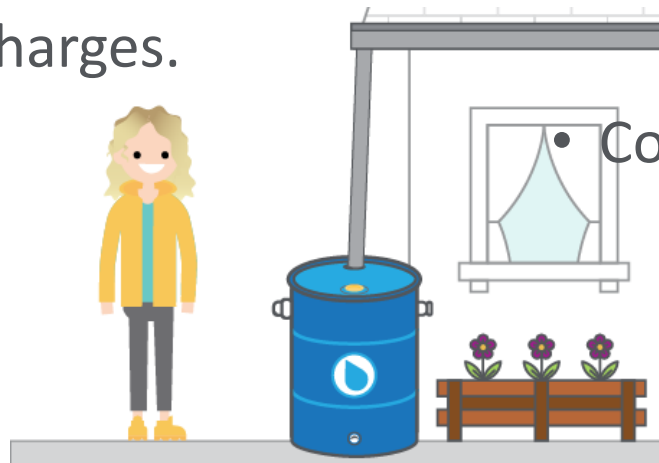
Underwater

- Plants may wilt.
- Dehydration causes loss of turgidity.
- Transpiration occurs at too high of a rate.
- Causes negative pressure to occur.
- Water will help.
- Good soil will help.

Is there a difference in water?

Rain.

- No hard minerals.
- Tends to have a higher acidity.
- Contains nitrates and other charges.
- Unreliable.
- Can be damaging.
- Free.
- Acts as a natural flush.



Tap

- Readily available.
- Convenient pressure.
- Contains more minerals.
- Controlled flow and pressure.
- Little to no charge.
- Cost.
- High alkaline.

Water leaves or roots?



Washes off dust.
Cools plant.

Wash away fungus and bugs.



Dissolution of nutrients.
Necessary for xylem system.

Cools the soil.

Ways to water.

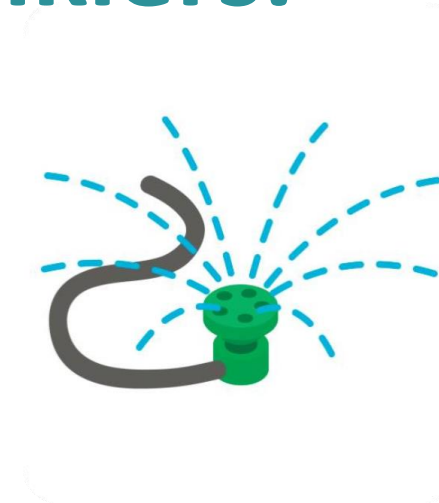
- Nozzle or wand.
- Sprinkler.
- Soaker hose.
- Irrigation system.
- Watering can.
- Rain.



Nozzles and Sprinklers.



Change the pattern.
Lightweight.
Versatile.
Control.
Efficient.

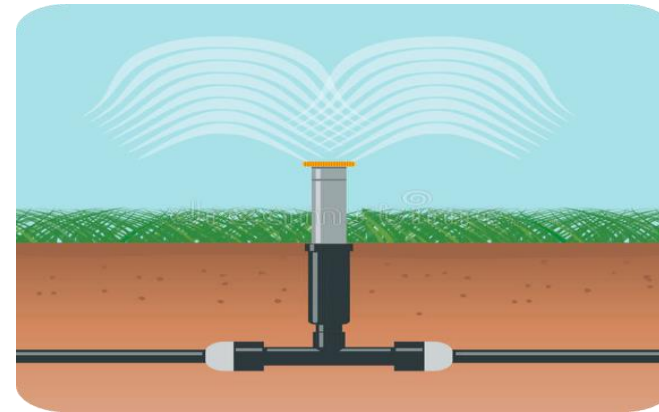


Lightweight.
Broad range.
Fun to play in.
Loved by birds.
Inefficient and wasteful.

Soaker hoses and irrigation



Efficient.
Cost effective.
Semi-permanent.
Easy control.
Limited usage.



Effective.
Timed.
Expensive.
Inefficient.
Static.

Watering can and rain.



Efficient.
Lightweight.
Great for fertilizers.
Time consuming.
Affordable..



Free.
Healthy.
Effective.
Unreliable.
Potential for damage.





Things to keep in mind.

- Watering in a mulched area.
- Watering in an area with fabric.
- Different plants have different schedules.
- Different areas have different schedules.
- Not one size fits all, different water systems can all be used in the same garden.
- Best time to water is early morning. But water as needed.

Seasonal maintenance recap.

- Weeding.
- Cultivation.
- Fertilizing.
- Deadheading.
- Pruning.
- Pests.
- Diseases.





Seasonal reminders.

- Enjoy!!!
- The season is longer than you think.
- Look after yourself.
- Ask for help.
- No such thing as one size fits all.
- A garden is a marathon not a sprint.
- It is very okay to try new things or stick with tried and true, or to combine both.

THANK YOU!
